



Test Report

Report No. TLHN18102215793

Date: Nov. 05, 2018

The following sample(s) was/were submitted and identified by/on behalf of the client as:

Applicant : MACRICH INDUSTRY CO., LTD.
Address : Room 1215, Building 1B, Changsheng-Shangdong Zone, No.230-1, Chezhan Road(N), Xianghu Subdistrict, Furong District, Changsha, Hunan, China.
Sample Name : Conduit Fittings
Model No. : Conduit Tube Series, C Channel Steel Series, Steel Flexible Conduit Series, Conduit Pipe Bender & Accessories Series, Stock & Die Sets Series, Solid Couplers Series, Solid Bend Series, Nipples Series, Earthing Couplers Series, Dome Cover Series, Hook Plates, Switch & Socket Boxes Series, Extension Switch & Socket Boxes Series, Adaptable Boxes Series, Fixing Strip Series, Box Mounting Bracket Series, Box Lids Series, Extension Rings Series, Loop-in Box Series, Adaptors Series, Spacer Bar Saddles Series, Clip Saddles Series, Clip(Half) Saddles Series, Reducer(Hexagon) Series, Hexagon Stopping Plugs Series, Washers Series, Locknuts(Hexagon) Series, Milled Edge Lock Rings Series, Jack Chain, Crampets(Flat) Series, Channel Nuts(Spring Nuts) Series, Cable Guard Series, Girder Fixings Series, Channel Strut Accessories Series.
Receive Date : Oct. 22, 2018
Testing period : Oct. 22, 2018 – Nov. 05, 2018
Test Requested : Please refer to the next page(s).
Test Method : Please refer to the next page(s).
Test Result(s) : Please refer to the next page(s).

Authorized Signature



For and on behalf of
Shanghai Global Testing Services Co., Ltd.

Shi Lei/Kevin

General Manger -GTS/SHO

Page 1 of 6

This document is issued subject to GTS CENERAL CONDITIONS OF SERVICE, and shall not be reproduced except in full or with written approval by GTS Testing.

Shanghai Global Testing Services Co., Ltd.

Floor 2nd, Building D-1, No. 128, Shenfu Road, Minhang District, Shanghai, China.

Tel: (86-21) 3363 7866 Fax: (86-21) 3363 7858 E-mail: info@gts-lab.com Web Site: http://www.gts-lab.com



Test Report

Report No. TLHN18102215793

Date: Nov. 05, 2018

Test Method:

EN 61386-1:2008 – Conduit systems for cable management – Part 1: General requirements (Class 4)

Test Conducted as accordance to EN 61386-1:

1. Marking and Documentation
2. Construction
3. Dimensions
4. Impact Test
5. Bonding Test
6. IP 30 Test

Test Results:

1. Marking and Documentation

Sample Description	AB442KG	SS147	EN 61386-1:2008 Requirements (Class 4)
Conduit Fittings	Pass		Clause 7 The marking shall durable and clearly legible.

Sample Description	SBS25G	GC25	EN 61386-1:2008 Requirements (Class 4)
Conduit Fittings	Pass		Clause 7 The marking shall durable and clearly legible.

2. Construction

Sample Description	AB442KG	SS147	EN 61386-1:2008 Requirements (Class 4)
Conduit Fittings	Pass		Clause 9 Shall have no sharp edges, burrs or surface projections which are likely to damage insulated conductors or cables, or injury on the installer or user.

Page 2 of 6

This document is issued subject to GTS GENERAL CONDITIONS OF SERVICE, and shall not be reproduced except in full or with written approval by GTS Testing.

Shanghai Global Testing Services Co., Ltd.

Floor 2nd, Building D-1, No. 128, Shenfu Road, Minhang District, Shanghai, China.

Tel: (86-21) 3363 7866 Fax: (86-21) 3363 7858 E-mail: info@gts-lab.com Web Site: http://www.gts-lab.com



Test Report

Report No. TLHN18102215793

Date: Nov. 05, 2018

Sample Description	SBS25G	GC25	EN 61386-1:2008 Requirements (Class 4)
Conduit Fittings	Pass		Clause 9 Shall have no sharp edges, burrs or surface projections which are likely to damage insulated conductors or cables, or injury on the installer or user.

3. Dimension

Sample Description	AB442KG	SS147	EN 61386-1:2008 Requirements (Class 4)
Conduit Fittings	Pass		Clause 8 Shall comply with IEC 60423

Sample Description	SBS25G	GC25	EN 61386-1:2008 Requirements (Class 4)
Conduit Fittings	Pass		Clause 8 Shall comply with IEC 60423

4. Impact Test

Sample Description	AB442KG	SS147	EN 61386-1:2008 Requirements (Class 4)
Conduit Fittings	Pass		Clause 10.3 Shall be no sign of disintegration nor shall there be any crack visible to normal or corrected vision without magnification.

Sample Description	SBS25G	GC25	EN 61386-1:2008 Requirements (Class 4)
Conduit Fittings	Pass		Clause 10.3 Shall be no sign of disintegration nor shall there be any crack visible to normal or corrected vision without magnification.

Page 3 of 6

This document is issued subject to GTS GENERAL CONDITIONS OF SERVICE, and shall not be reproduced except in full or with written approval by GTS Testing.

Shanghai Global Testing Services Co., Ltd.

Floor 2nd, Building D-1, No. 128, Shenfu Road, Minhang District, Shanghai, China.

Tel: (86-21) 3363 7866 Fax: (86-21) 3363 7858 E-mail: info@gts-lab.com Web Site: http://www.gts-lab.com



Test Report

Report No. TLHN18102215793

Date: Nov. 05, 2018

5. Bonding Test

Sample Description	AB442KG	SS147	EN 61386-1:2008 Requirements (Class 4)
Conduit Fittings	Pass		Clause 11.2 The resistance shall not exceed 0.1Ω.

Sample Description	SBS25G	GC25	EN 61386-1:2008 Requirements (Class 4)
Conduit Fittings	Pass		Clause 11.2 The resistance shall not exceed 0.1Ω.

6. Degree of Protection – Ingress of Foreign Solid Objects

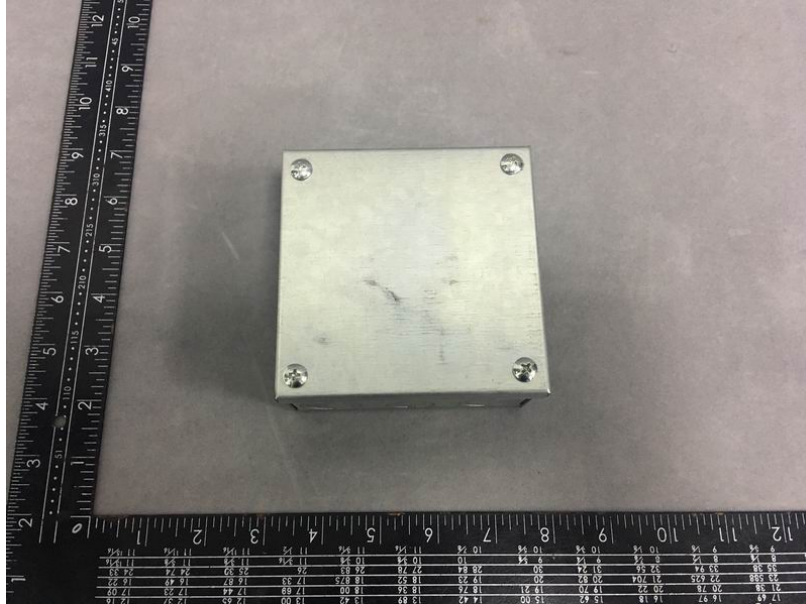
Sample Description	AB442KG	GC25	EN 61386-1:2008 Requirements (Class 4)
Conduit Fittings	Pass		Clause 14.1 Minimum requirements of IP 30

Test Report

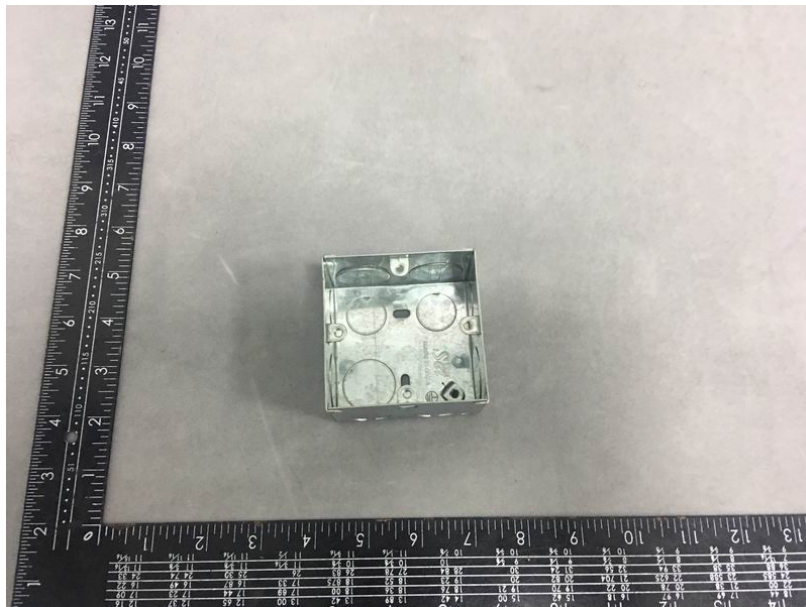
Report No. TLHN18102215793

Date: Nov. 05, 2018

Sample Photo(s):



Adaptable Boxes/AB442KG



Switch & Socket Boxes/SS147

Test Report

Report No. TLHN18102215793

Date: Nov. 05, 2018



Space Bar Saddles/SBS25G



Conduit Tube/GC25

*****End of Report*****